

World Map PRO HD

V 2.0
Software

NEW
Get the V 2.0 enhanced navigation functions on your chartplotter.

HD
High Definition LCD
800x600

MAX
C-MAP NT

HD-Net*



- Easy, reliable, secure.
- * HD Network, allow plug and play data sharing of radar, chartplotting, fishfinder, weather forecast and navigation functions between 2 displays.
- Specially designed for marine external use.
- Optional video camera. Provides security in engine room during navigation or when monitoring the stern while docked.
- High definition radar system up to 48 Nm range with chart overlay function (Optional kit).
- Safety improving, the new AIS function displays commercial ships position on your route (feature available by connecting a AIS receiver).
- Weather forecast provided along route. The system can monitor wave height, wind speed and direction (Optional kit). All downloaded weather forecast data is free of charge to Lorenz Customers.
- Exclusive "Guardian Alarm" function. Warns you in real time of underwater obstacles including rocks or reefs during navigation.



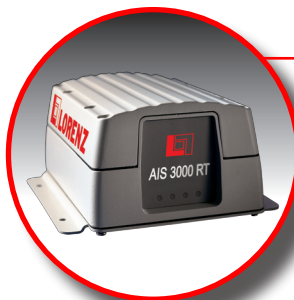
Color/IR video Camera

waterproof up to 15 m, wide angle, glass shielded lens with aluminium anticorrosion vibration proof case and IR LED sensor for night vision and engine room use.



SRD radar

antennas, dome and open array, from 16 to 48 Nm range. With the chart overlay function you can see the radar image over the chart.



AIS 3000 RT

Lorenz class B AIS transponder allow you to display the other ships position on your chartplotter and sends your navigation data to the other vessels.

LORENZ
MARINE ELECTRONICS

One Touch To Choose Your World



V 2.0 Software

V 2.0
Software

- Background satellite images
- Multilanguage chart details
- Enhanced Real Time ZOOM
- Auto Route checking (automatically checks the safety of the route)

Optionals

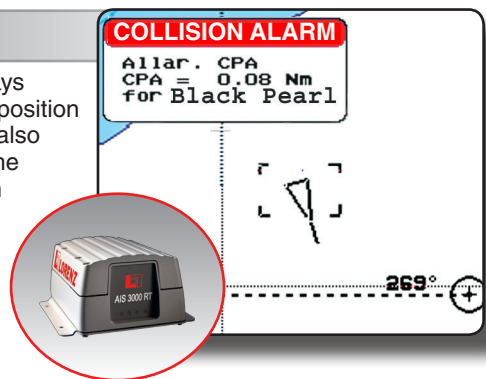
Radar Overlay

SRD Radar antennas, dome and open array, from 24 to 48 Nm range. With chart overlay function you can see the radar image over the electronic chart.



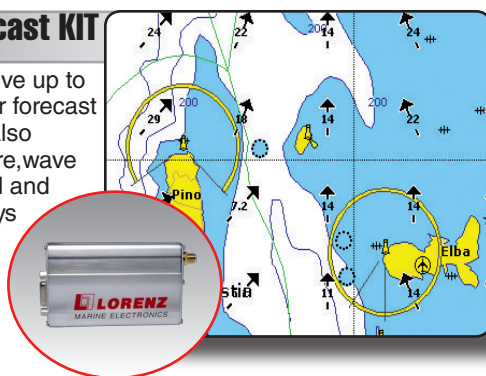
AIS

AIS function displays commercial ships' position on your route and also allows you to set the anti-collision alarm (feature available by connecting the AIS2000 receiver or AIS3000 transponder).

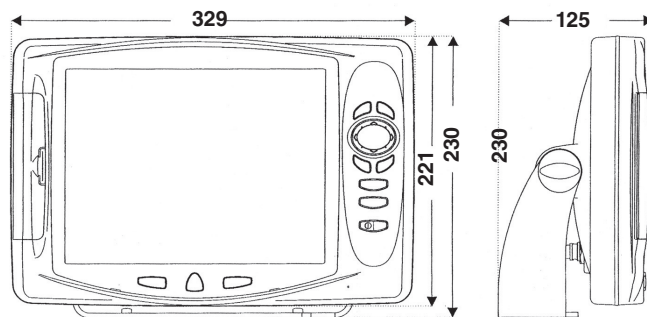


Weather Forecast KIT

Allows you to receive up to the minute weather forecast along your route. Also gauges temperature, wave height, wind speed and direction and displays them clearly on LCD screen.



Dimensions:



- Dimension in mm

MAIN CHARACTERISTICS:

- Very fast zoom and chart redraw
- 8 languages menu
- First person 3D navigation function
- Preview multifunction pages selection
- Split screen function
- Alphanumeric user points insertion
- Mark, Event, Waypoint positioning 3000 points max
- 25 routes with 100 user points max per route
- 5 tracks with 5000 points max
- EBL function (Electronic Bearing Line)
- VRM function (Variable Range Mark)
- MOB function (Man Over Board)
- Bathymetric selection and reading
- Information on NAV AIDS
- GO TO function "Click and Go" easy software

OPTIONALS FUNCTIONS:

- AIS function displays commercial ships position on your route
- Echo sounder system with graphic and automatic depth range
- Weather conditions shown on the route with Wave height, Wind speed and direction
- Radar system from 24 to 48 Nm range with chart overlay function
- User c-card option to store and download Track, Routes and User points

ALARMS:

- Anticollision Alarm (connecting AIS2000 Receiver or AIS3000 Transponder)
- Guardian Alarm function, querying the map's data and verifying potential danger to navigation
- Arrival Alarm
- XTE Alarm
- Anchor Alarm
- Depth Alarm
- Grounding Alarm

TECHNICAL CHARACTERISTICS:

- High Definition sun viewable LCD TFT color display (800x600)
- Ergonomic and waterproof silicon keypad
- 5 In/Out via NMEA 0180/0183 signal (1 for GPS)
- 2 analogic video input
- Operating temperature -10 °C to +65 °C
- Power Consumption max 11 Watt, 10-35 Vdc
- Dimensions (mm) W 329 x H 231 x D53
- Weight (gr.) 1600

LORENZ
MARINE ELECTRONICS

Lorenz Electronics
Italy - Via Lirone 10 -20068 -
Persiciera Borromeo (Mi)
Tel. +39 0255301870
Fax +39 0255301933

One Touch To Choose Your World